

# CHESHIRE HISTORIC TOWNS SURVEY

## Over and Winsford

### Archaeological Strategy



2003

# CHESHIRE HISTORIC TOWNS SURVEY

## *Over and Winsford*

### *Archaeological Strategy*

2003

Environmental Planning  
Cheshire County Council  
Backford Hall  
Backford  
Chester  
CH1 6PZ

*These reports are the copyright of Cheshire County Council and English Heritage. We would like to acknowledge the assistance of Cheshire and Chester Archives and Local Studies, Frodsham and District Local History Group, Winsford Local History Society, Andrew Fielding, Lion Salt Works Project Director and Dr Chris Lewis, University of Liverpool, in the preparation of these reports. The archive is held by the Cheshire County Sites and Monuments Record.*

*The Ordnance Survey mapping within this document is provided by Cheshire County Council under licence from the Ordnance Survey, in order to fulfil its public function to make available Council held public domain information. The mapping is intended to illustrate the spatial changes that have occurred during the historical development of Cheshire towns. Persons viewing this mapping should contact Ordnance Survey copyright for advice where they wish to licence Ordnance Survey mapping/map data for their own use. The OS web site can be found at [www.ordsvy.gov.uk](http://www.ordsvy.gov.uk)*

# Over and Winsford: Area of Archaeological Potential

## 1. Introduction

- 1.1 An Area of Archaeological Potential (AAP) has been identified in Over and Winsford comprising three Archaeological Character Zones (ACZs). Each Archaeological Character Zone is identified by its defining archaeological or historical characteristics, or *Primary Characteristics*. For example, within the Medieval Settlement Zone (Archaeological Character Zone 2), the defining characteristics include the medieval borough and later medieval tenements.
- 1.2 Each Archaeological Character Zones may also include sites and features which are not defining characteristics but are nonetheless of archaeological and historical importance, and these are identified as *Secondary Characteristics*. For example, Archaeological Character Zone 2 includes post medieval settlement, which has been identified as a Secondary Characteristic.
- 1.3 The list of characteristics is not exhaustive, and it is possible that other types of important archaeological remains and features exist within each Archaeological Character Zone. The boundaries of the AAP and the Archaeological Character Zones, and the list of Primary and Secondary Characteristics are intended as a guide for planners and developers. They are based on current knowledge, and are therefore subject to change as new information is revealed.

## 2. Existing Designations (Figure 1)

<b>Scheduled Ancient Monuments</b>	Two – Cross base at Salterswall on the road junction 150m WNW of Westholme Farm (SAM 25700) and Standing cross in the churchyard of St Chad's Church, Over (SAM 25706)
<b>Listed Buildings</b>	Grade I - None Grade II* - St Chad's Church, Over Grade II - 21
<b>Conservation Areas</b>	One – Winsford, St Chad's Church.
<b>Registered Parks and Gardens</b>	None

### 3 The Archaeological Character Zones (Figure 2)

#### Zone 1: Early Medieval Over

Primary Characteristics	
<p><b>Early Medieval Church and Churchyard, Over</b></p>	<p>The sub-circular churchyard wall, which partially survives in the modern graveyard of St Chad's church, is a typical characteristic of an early medieval foundation. This early date is also supported by the discovery of a pre-Conquest cross shaft and the dedication of the church to St Chad.</p>
<p><b>Possible Settlement?</b></p>	<p>It has been suggested that the original focus of the settlement of Over was in the vicinity of the early medieval church, in the area known as Church Hill or Over Church. The exact location of this settlement is unknown and this Zone has therefore been approximately defined.</p>

Secondary Characteristic	
<p>Medieval Church of St Chad</p>	<p>The church of St Chad's can be traced back through documentary sources to the 12th century. The church includes 14th century fabric, despite being partially rebuilt in 1543 and renovated in the early 20th century.</p>

## Zone 2: Medieval Settlement

Primary Characteristics	
<b>Borough</b>	A borough charter was granted to Over by the Abbot of Vale Royal c 1300. It is thought that the creation of the borough shifted the focus of Over from St Chad's church to Delamere Street, c 1km to the north. Here a number of regularly planned, long, narrow burgage plots fronted onto Delamere Street, and a number of boundaries survive which appear to respect the former layout of these tenements.
<b>Tenements</b>	Also located in this Zone were a number of tenements, which appear to post date the borough. Tenements are less regular in plan and appear to have been a product of piecemeal development.

Secondary Characteristic	
Post Medieval Settlement	This Zone underwent redevelopment during the post medieval period, although few buildings have survived from this period.

## Zone 3: Post Medieval Salt Production

Primary Characteristics	
Salt Works	Salt working is known to have taken place at Winsford since the early 18th century. Salt works utilised the Weaver Navigation for the transportation of salt, and works spread north along its banks for c 2km.
West Cheshire Railway	The West Cheshire Railway had a branch line terminating at the Winsford and Over station on the west bank of the River Weaver, which provided an alternative to the transportation of salt via the Weaver Navigation. On the eastern bank, numerous salt works were connected to the London and North Western Railway via a series of branch lines.

Secondary Characteristics	
Possible Medieval Settlement at Winsford	The place name Winsford is documented from the 13th century. It indicates that the crossing of the River Weaver at Winsford had origins as a ford, and this may have attracted settlement during the medieval period.
Post Medieval Settlement at Winsford	As salt works developed along the River Weaver, domestic settlement also developed in the vicinity of Winsford Bridge.



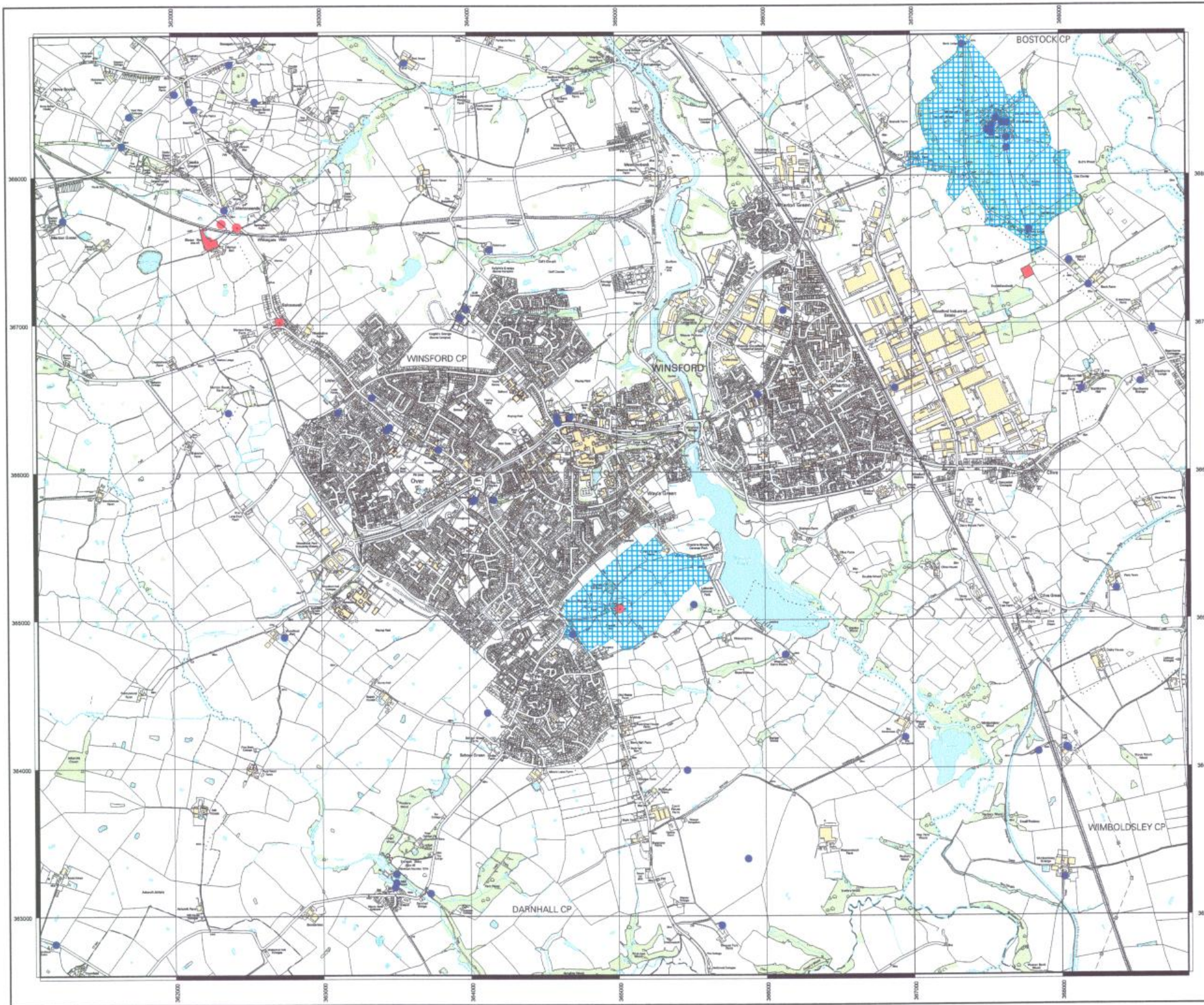


Figure 1: Over and Winsford Existing Designations

-  Scheduled Ancient Monuments
-  Listed Building
-  Conservation Area

1:25000

This map is reproduced from Ordnance Survey material with the permission of Ordnance Survey on behalf of Her Majesty's Stationer © Crown Copyright. Unauthorised reproduction infringes Crown Copyright and may lead to prosecution or civil proceedings. Cheshire County Council. Environmental Planning LA076503. 2002



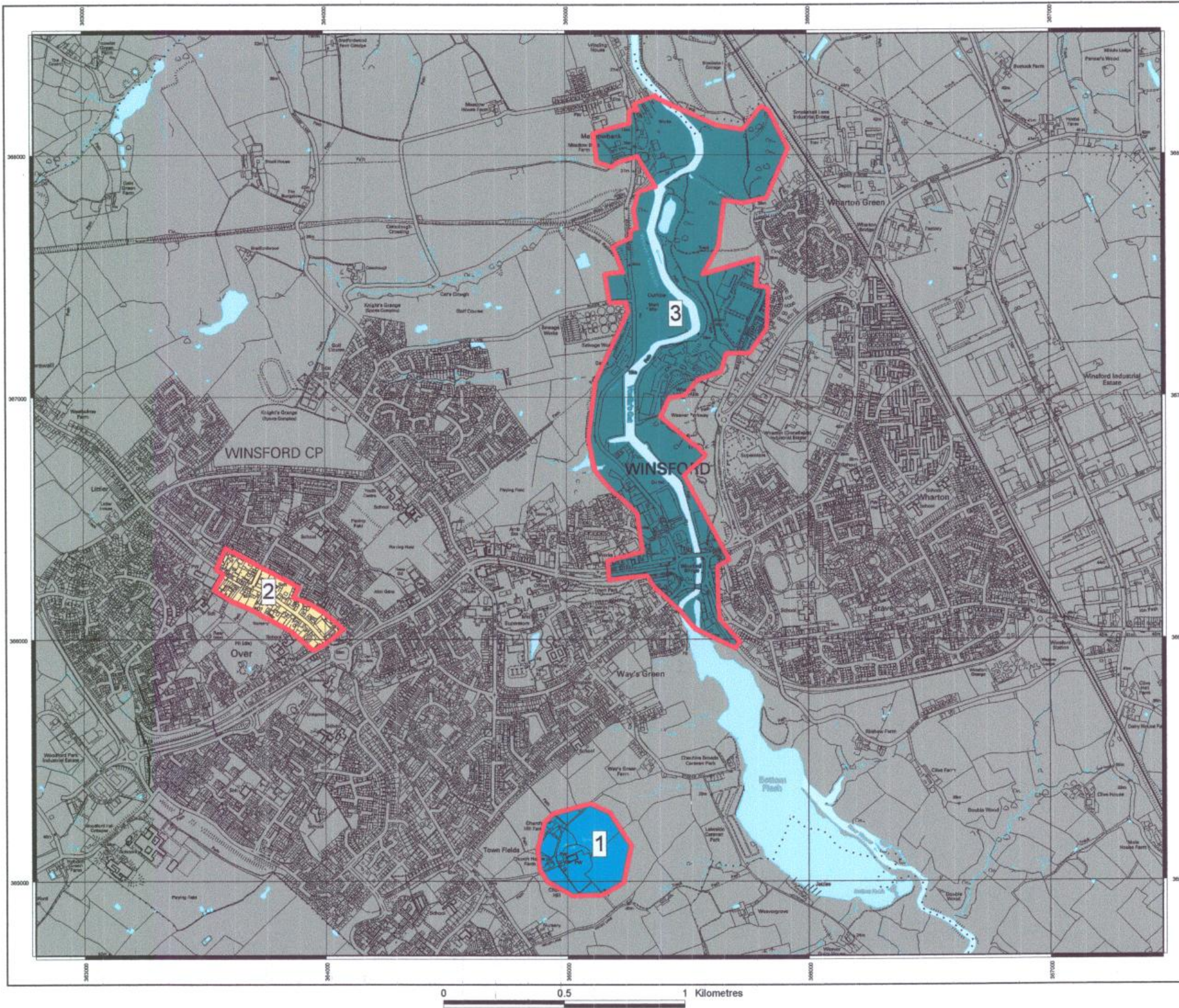







Figure 2: Over and Winsford Area of Archaeological Potential and Archaeological Character Zones

-  Area of Archaeological Potential
-  ACZ 1: Early Medieval Over
-  ACZ 2: Medieval Settlement
-  ACZ 3: Post Medieval Salt Production
-  Area Outside the Historic Core

1:15000

This map is reproduced from Ordnance Survey material with the permission of Ordnance Survey on behalf of Her Majesty's Stationer © Crown Copyright. Unauthorised reproduction infringes Crown Copyright and may lead to prosecution or civil proceedings. Cheshire County Council. Environmental Planning LA076503. 2002