

## Guidance for using Public Map Viewers with Revealing Cheshire's Past

The mapped depictions of nationally and locally designated heritage assets are available via Cheshire East Council's and Cheshire West and Chester Council's Public Map Viewers. Further information on each asset is available from the online version of the HER, Revealing Cheshire Past.

Nationally designated heritage assets include:

- *Area of Archaeological Importance*
- *Battlefields Register*
- *List of Buildings of Special Architectural or Historic Interest (listed buildings)*
- *Register of Parks and Gardens of Special Historic Interest*
- *Scheduled Monuments*

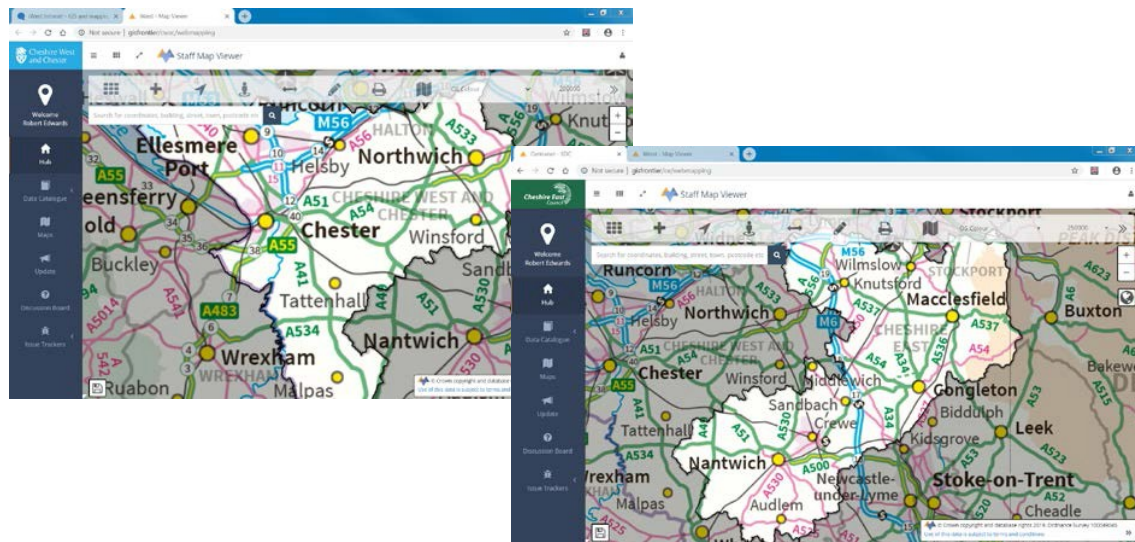
Locally designated heritage assets include:

- *Areas of Archaeological Potential*
- *Areas of Special Archaeological Potential*
- *Article 4 Directions*
- *Conservation Areas*
- *Locally Listed Buildings of Special Architectural or Historic Interest (locally listed buildings)*

You can access the Public Map Viewers through the following links:

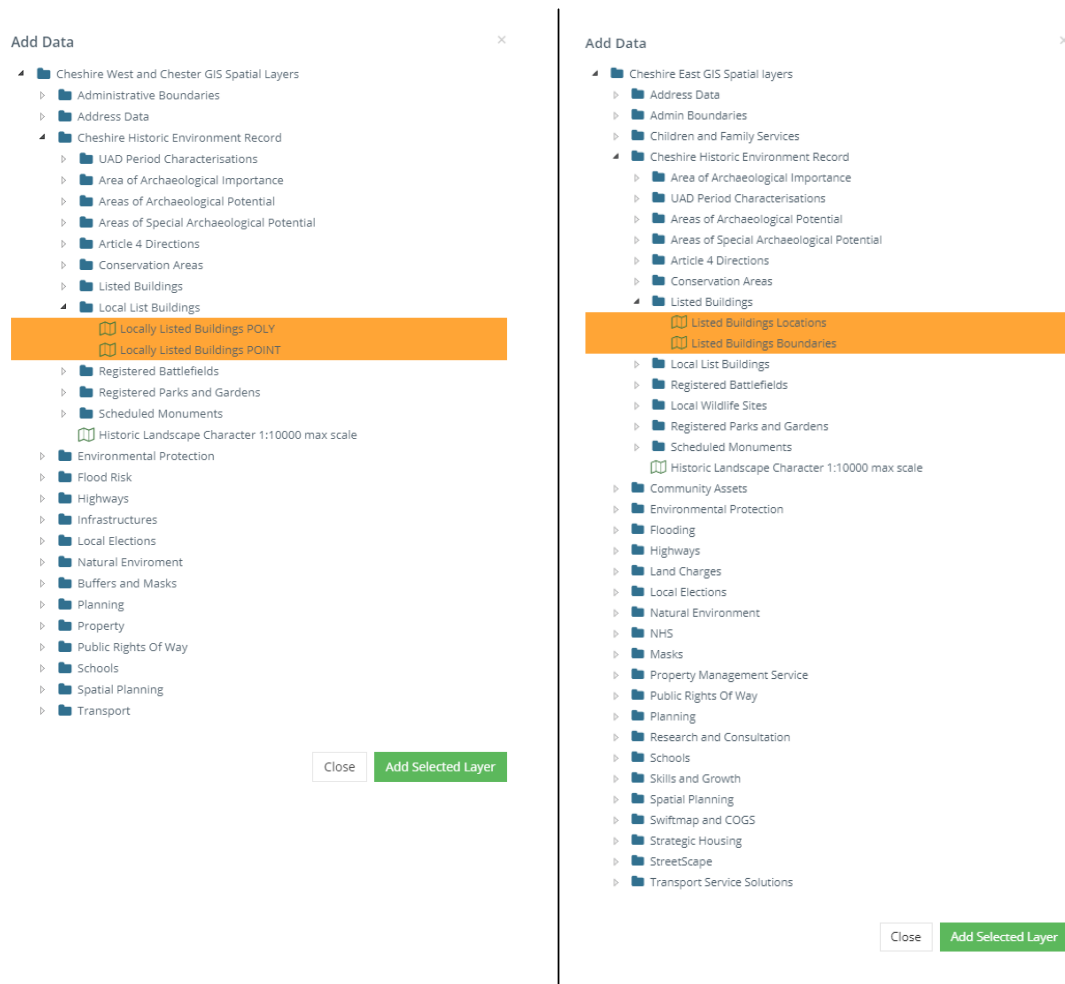
Cheshire West and Chester - <https://maps.cheshirewestandchester.gov.uk/cwac/webmapping>

Cheshire East - <https://maps.cheshireeast.gov.uk/ce/webmapping>.



Map data is added to the map via the Add Data button on the Menu Bar

This will open up a list labelled Add Data. Items can be expanded by clicking on ▷ symbol to left of any folders on the list. The relevant layers are under *Cheshire Historic Environment Record*.



*Cheshire West and Chester*

*Cheshire East*

Clicking the name of a layer will highlight it and clicking [Add Selected Layer] will add the layers to the map. Click [Close] once you have added the layers you are interested in.

**Please note that you may have to zoom in on the map for the layers to become visible as they are configured to only display at certain scales.**

We also advise that both the Locations (points) and Boundaries (polygons) layers are loaded for the information you are interested in, as they are configured to display at different scales.

Clicking on any of the depicted heritage assets will reveal a limited amount of information on it. Further information is available by clicking on the hyperlink called [Revealing Cheshire's Past](#). Clicking on this will open a new window with the [Revealing Cheshire's Past](#) record for the designation in a new browser tab.